

Thangram digital

Modular entry panels

Thangram is the new line of BPT modular entry panels, the first available for the new digital IP technology system (the XiP system) and the only one capable of unparalleled colour video quality. Thangram entry panels stand out due to their innovative and attractive design, slim lines and high performance. A new generation of entry panels, perfect for satisfying your desire to surprise and astound.

- Minimum wall-mounted thickness: only **25** mm (2 mm embedded)
- Maximum colour video quality both day and night
- Protection grade IP54
- LED indicators



ANSADOR

Ansador Ltd. 4 River Reach, Gartons Way, London. SW11 3SX
Tel: 020 7228 7777 Fax: 020 7924 2376 Sales@ansador.co.uk

Component range

Audio and video entry panels



Metal audio entry panel



Metal video entry panel



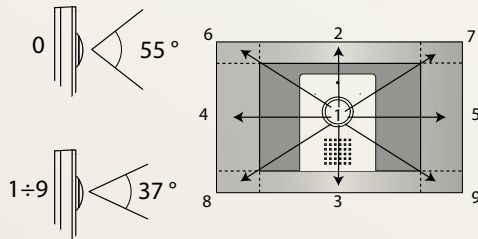
Embedding box



Metal embedding frame

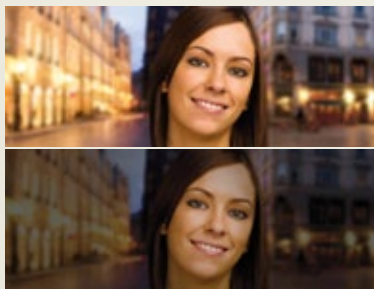


When sold as an additional panel (i.e not in kit form) the Thangram is not supplied with a front plate as standard but can be personalised with any of the available front plates.



Digital camera angle adjustment

Thangram features the "wide eye" system (angle of lens aperture: 55°), which gives an extra-wide field of vision (for example, from a distance of 50 cm from the entry panel, the camera can capture an image 86 cm in width and 57 cm in height). At the moment of installation of the entry panel, the angle of aperture can be reduced to as little as 37° by digitally adjusting the zoom, and the camera can be oriented in the desired direction.



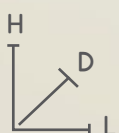
perfect colour in any condition

The sophisticated light guide system, developed jointly with the Plast Optica Research Centre (a division of FIAT's research centre), guarantees perfect night-time illumination. The latest digital sensors, together with sophisticated image-processing algorithms, guarantee superlative video quality in any ambient conditions.



(* Embedding box depth 54.5 mm; projecting from the wall 2 mm.

product dimensions



	L (mm)	H (mm)	D (mm)
Wall-mounted	99	254	25
Embedded	127	281	2*